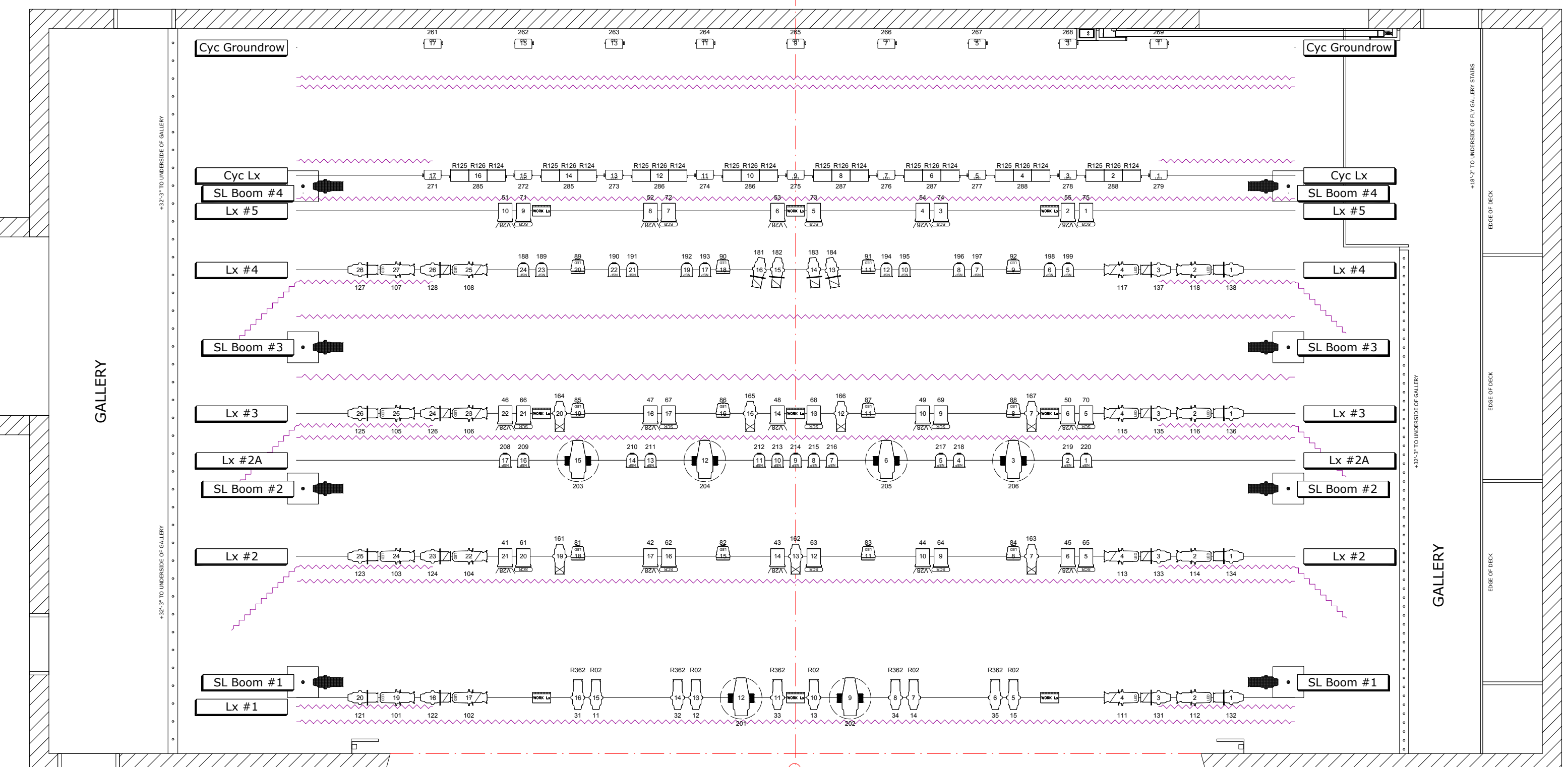
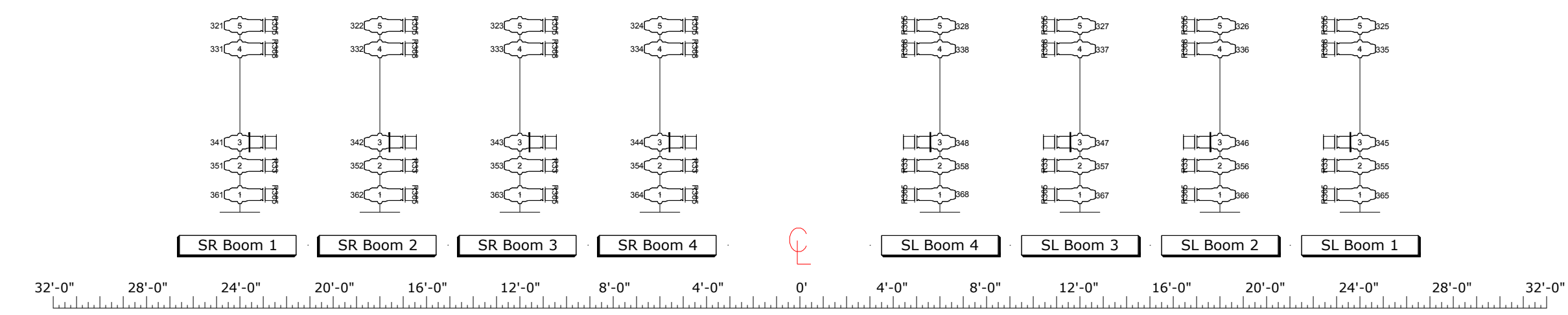
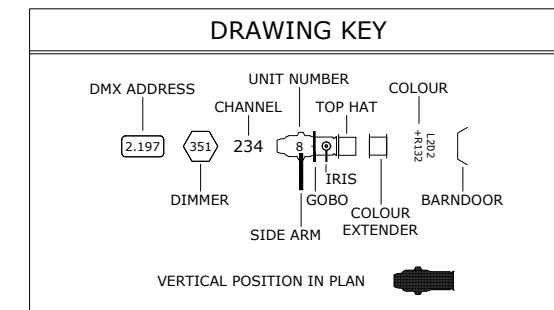
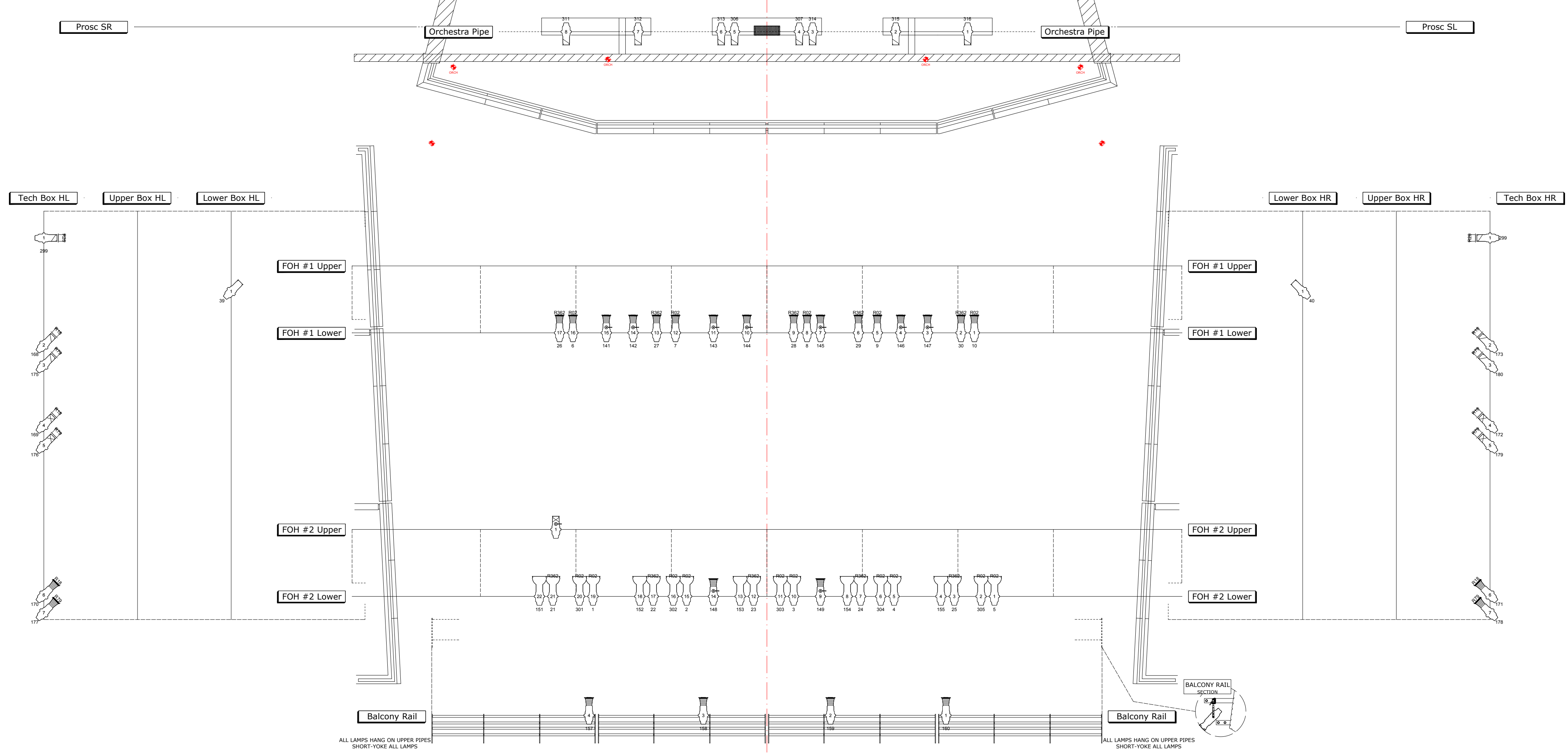


LEGEND	
	USED STOCK
	20 20
	26 26
	12 18
	39 47
	60 74
	0 10
	0 6
	16 16
	24 24
	0 0
	0 0
	30 30
	12 12
	18 18
	16 16
	2 2
	9 9
	15 15



LINESSET ROSTER		
ALL ELECTRICS TRIMS TO THE PIPE		
ALL BORDER TRIMS ARE TO THE BOTTOM OF THE BORDER		
#	DESCRIPTION & NOTES	TRIM
53	Acoustic Shell Rear Wall - Permanent	
52	Cyclorama	
51	US Traveler	
50	Empty	
49	Empty	
48	Empty	
47	Unavailable/Obstructed	
46	#4 Acoustic Shell Ceiling - Permanent	
45	#2 Edge	
44	Cyc Electric	
43	Empty	
42	#5 Border	
41	#5 Electric	
40	Unavailable/Obstructed	
39	Empty	
38	Empty	
37	#4 Electric	
36	#4 Legs	
35	#3 Acoustic Shell Ceiling - Permanent	
34	#4 Border	
33	Empty	
32	Empty	
31	Empty	
30	Empty	
29	Mid-Stage Traveler	
28	Empty	
27	Unavailable/Obstructed	
26	#3 Electric	
25	#3 Legs	
24	#3 Border	
23	Unavailable/Obstructed	
22	#2A Electric	
21	#2 Acoustic Shell Ceiling - Permanent	
20	Large Projection Screen	
19	Empty	
18	Empty	
17	Empty	
16	Unavailable/Obstructed	
15	#2 Electric	
14	#2 Edge	
13	#2 Border	
12	Empty	
11	Empty	
10	Unavailable/Obstructed	
9	#1 Acoustic Shell Ceiling - Permanent	
8	Unavailable/Obstructed	
7	Empty	
6	Small Projection Screen	
5	Spans Border	
4	#1 Electric	
3	#1 Edge	
2	#1 Border	
1	Main Curtain	
0	Fire Curtain	



THE BURLINGTON PERFORMING ARTS CENTRE

440 Locust St.
Burlington, ON
L7S 1T7
(905) 681-2551

Main Theatre -- House Electrics Plot

Director of Operations: Steve Solski
Email: steve.solski@burlington.ca / x.6320