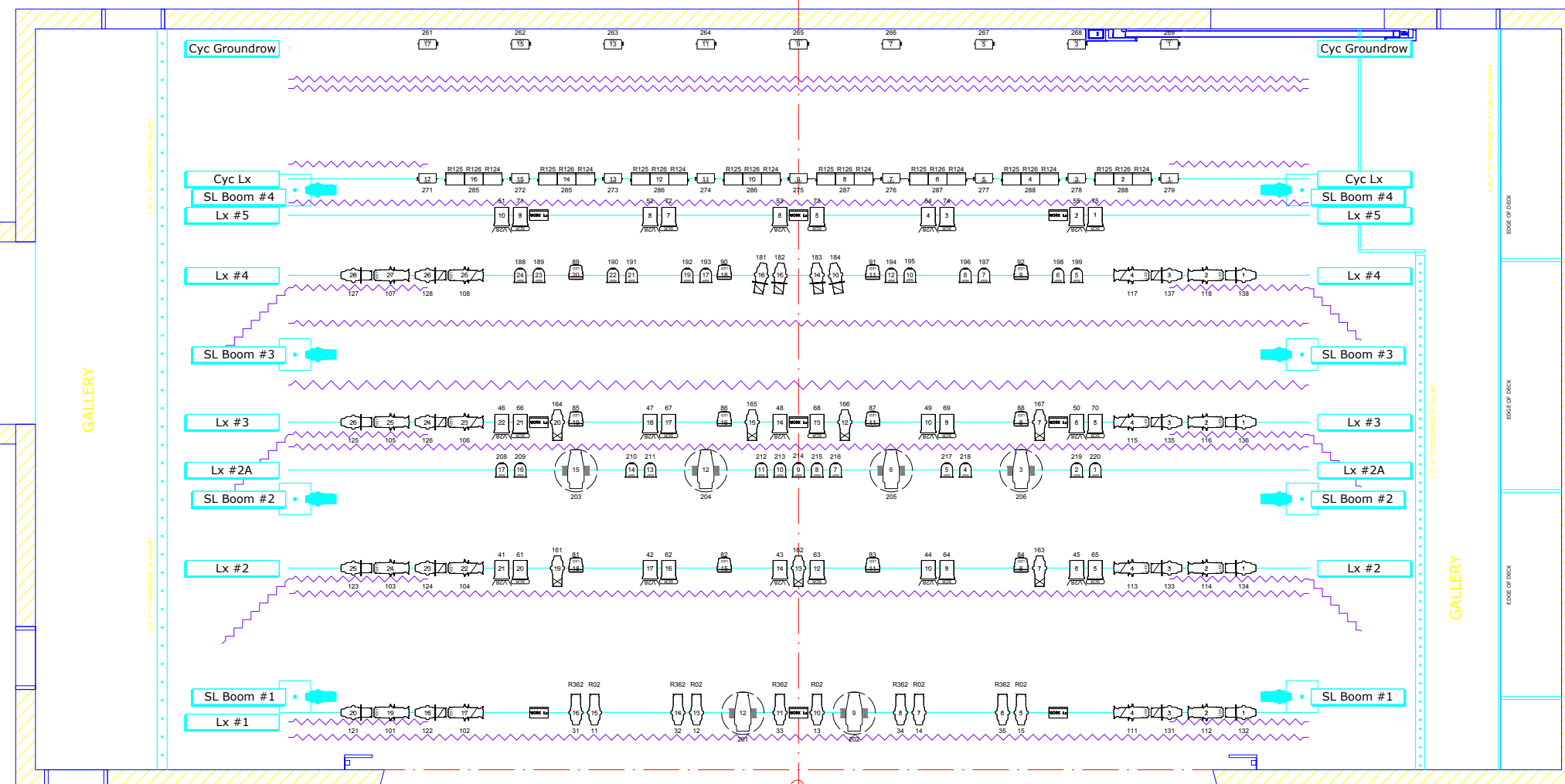
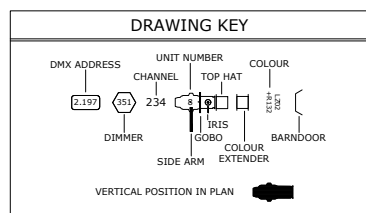
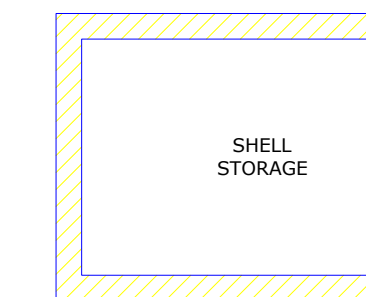
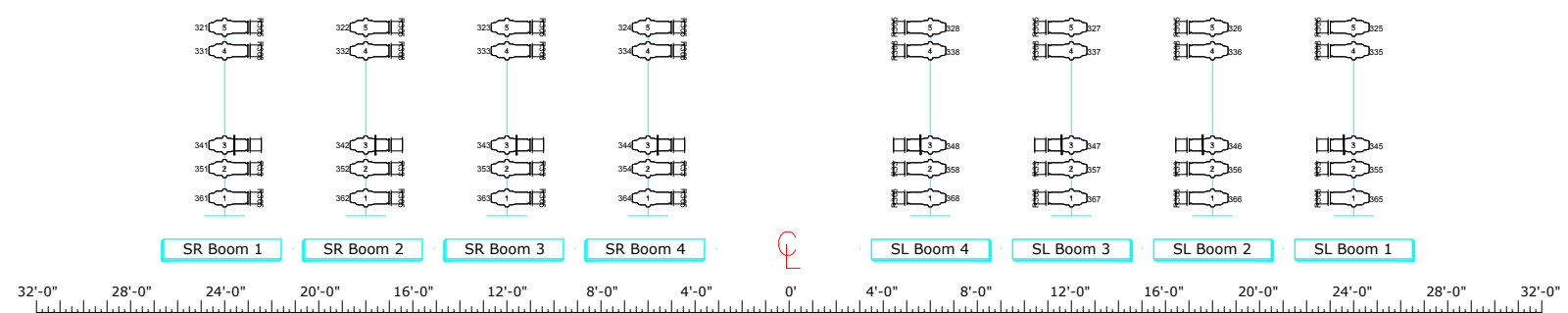


LEGEND	
	10° SOURCE 4 750W
	14° SOURCE 4 750W
	19° SOURCE 4 750W
	26° SOURCE 4 750W
	36° SOURCE 4 750W
	50° SOURCE 4 750W
	70° SOURCE 4 750W
	SOURCE 4 LUSTR SERIES 2
	SOURCE 4 PAR VNSP 750W
	SOURCE 4 PAR NSP 750W
	SOURCE 4 PAR MFL 750W
	SOURCE 4 PAR WFL 750W
	RAMA 6° FRESNEL 1kW
	CHAUVET COLORADO 2 QZT
	ALTMAN SPECTRA-CYC
	AURORA 3 CYC 1kW/cct
	LYCIAN M2 2040 1.2kW
	WORKLIGHT
	APOLLO SMART COLOR PRO 7.25



LINESET ROSTER		
ALL ELECTRICS TRIMS TO THE PIPE		
ALL BORDER TRIMS ARE TO THE BOTTOM OF THE BORDER		
#	DESCRIPTION & NOTES	TRIM
53	Acoustic Shell Rear Wall - Permanent	
52	Cycloram	
51	US Traveler	
50	Empty	
49	Empty	
48	Empty	
47	Unavailable/Obstructed	
46	#4 Acoustic Shell Ceiling - Permanent	
45	#5 Legs	
44	Cyc Electric	
43	Empty	
42	#5 Border	
41	#5 Electric	
40	Unavailable/Obstructed	
39	Empty	
38	Empty	
37	#4 Electric	
36	#4 Legs	
35	#3 Acoustic Shell Ceiling - Permanent	
34	#4 Border	
33	Empty	
32	Empty	
31	Empty	
30	Empty	
29	Mid-Stage Traveler	
28	Empty	
27	Unavailable/Obstructed	
26	#3 Electric	
25	#3 Legs	
24	#3 Border	
23	Unavailable/Obstructed	
22	#2A Electric	
21	#2 Acoustic Shell Ceiling - Permanent	
20	Large Projection Screen	
19	Empty	
18	Empty	
17	Empty	
16	Unavailable/Obstructed	
15	#2 Electric	
14	#2 Legs	
13	#2 Border	
12	Empty	
11	Empty	
10	Unavailable/Obstructed	
9	#1 Acoustic Shell Ceiling - Permanent	
8	Unavailable/Obstructed	
7	Empty	
6	Small Projection Screen	
5	Spare Border	
4	#1 Electric	
3	#1 Legs	
2	#1 Border	
1	Main Curtain	
FC	Fire Curtain	

Notes

- Installation of Dance Booms by Request
- Scroller Fresnel Concept do not accommodate Barn Doors

Universe Assignment

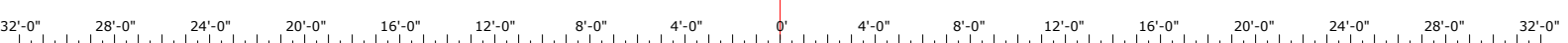
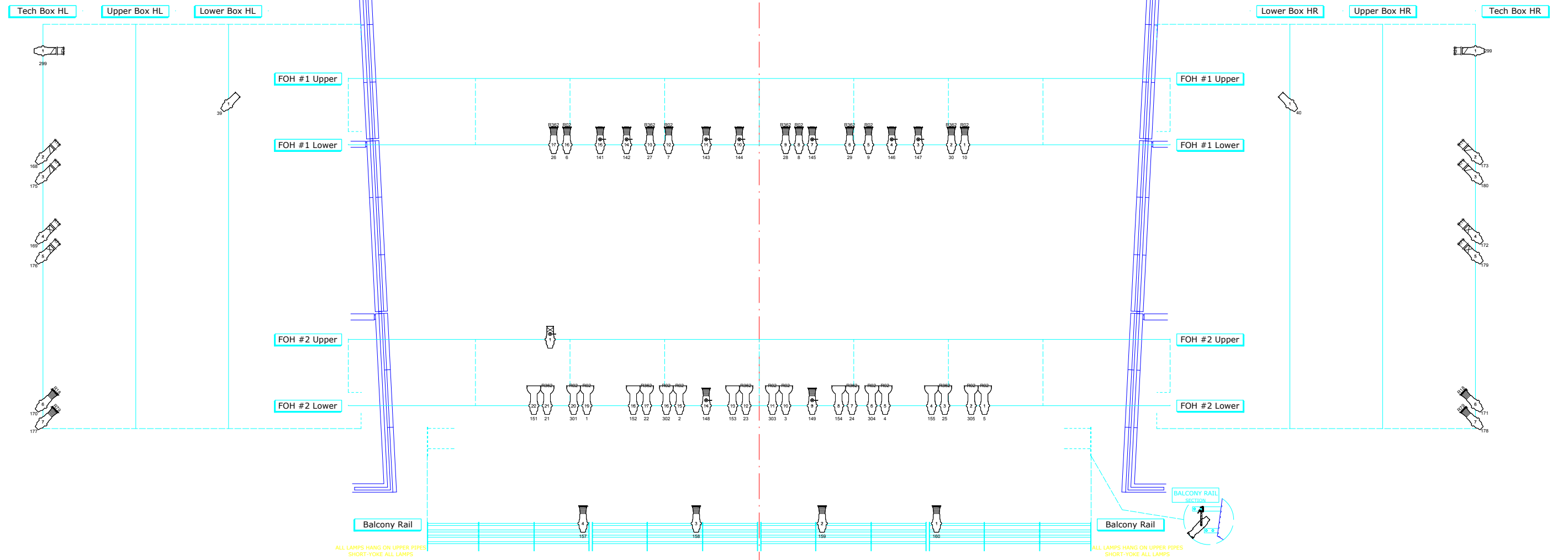
1 - Conventionals 2 - House Lx / Relays
 3 - Intelligent Lx 1 thru 3 4 - Intelligent Lx 4, Cyc & Deck

440 Locust St.
 Burlington, ON
 L7S 1T7
 (905) 681-2551

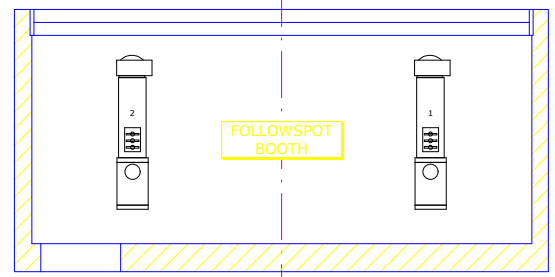
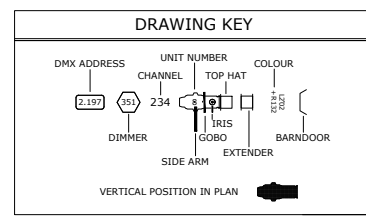
Main Theatre -- House Lx Plot (Onstage)

Director of Operations: Steve Solski
 Email: steve.solski@burlington.ca / x.6320

Drawn By: A. Boxall	Scale: 1/8" = 1'	Draft Date: Jan. 22/2021	Sheet 1 of 2
------------------------	---------------------	-----------------------------	-----------------



LEGEND	
	10° SOURCE 4 750W
	14° SOURCE 4 750W
	19° SOURCE 4 750W
	26° SOURCE 4 750W
	36° SOURCE 4 750W
	50° SOURCE 4 750W
	70° SOURCE 4 750W
	SOURCE 4 LUSTR SERIES 2
	SOURCE 4 PAR VNSP 750W
	SOURCE 4 PAR NSP 750W
	SOURCE 4 PAR MFL 750W
	SOURCE 4 PAR WFL 750W
	RAMA 6° FRESNEL 1kW
	CHAUVET COLORADO 2 QUAD ZOOM TOUR
	ALTMAN SPECTRA-CYC
	AURORA 3 CYC 1kW/cct
	LYCIAN M2 2040 1.2kW
	WORKLIGHT
	APOLLO SMART COLOR PRO 7.25



**THE BURLINGTON
PERFORMING
ARTS CENTRE**

440 Locust St.
Burlington, ON
L7S 1T7
(905) 681-2551

Main Theatre -- House Lx Plot (F.O.H)

Director of Operations: Steve Solski
Email: steve.solski@burlington.ca / x.6320

Drawn By: A. Boxall	Scale: 1/8" = 1'	Draft Date: Jan. 22/2021	Sheet 2 of 2
------------------------	---------------------	-----------------------------	-----------------